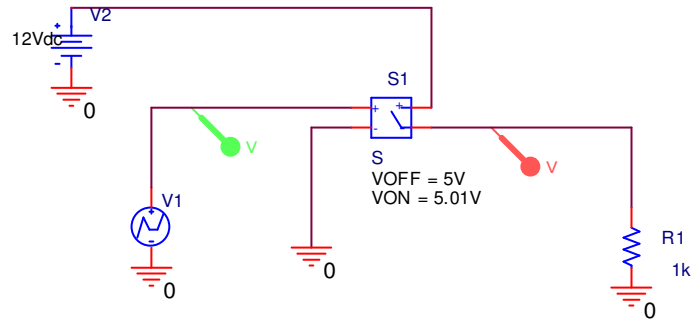




## Spændingskontrolleret switch

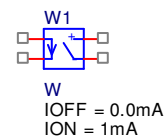
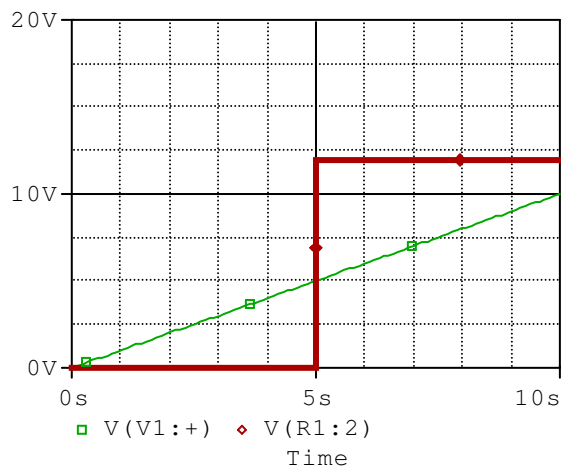
I Pspice / Analog findes en spændingskontrolleret switch. Den har navnet "S".



Der skal være en lille spændingsforskel ( hysteresese )

On og Off modstande kan ændres ved at dobbeltklikke på komponenten, og åbne dens spread sheet.

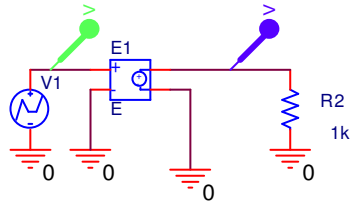
ence	ROFF	RON	
1	1e6	1.0	CAPRI
1	1e6	1.0	CAPRI



Tilsvarende findes en strømstyret switch, kaldet W

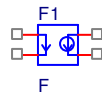
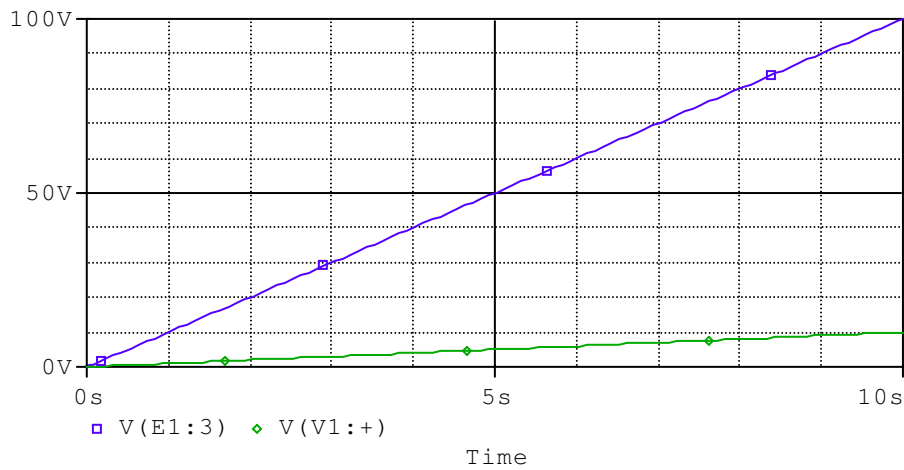


## Spændingsstyret spændingsgenerator

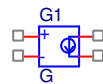


I generatorens regneark indtastes forstærkningen, ( gain ).

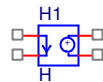
Designator	Gain	Graphic
E1	10	E.Normal
R2	10	E.Normal



Strømstyret strømgenerator hedder F / Analog:



Spændingsstyret strømgenerator; G / Analog



Strømstyret spændingsgenerator, H / Analog